

# Polka Pop Hat

by Ann-Cathrine Sipilä

The Polka Pop hat is an easy to wear slouchy hat knitted in fingering weight yarn. Knitting this hat requires basic skills in knitting. Blocking the hat after knitting is essential to even out the fabric in order to get a smooth finish to the stranded knitting part of the hat. The brim is cast on using the very flexible Tubular cast on, if you prefer a less flexible cast on edge you can use the long tail method.

## Yarn:

### Ullrike by Anki Merino Sock Mini

Main colour: Merlot

Contrast colour 1: Copper

Contrast colour 2: Shooting star

Size: adult

## Techniques:

Tubular cast on

Stranded knitting

Finished Size: Adult

## Needles:

One 40 cm circular needle 2.75mm (or one size smaller than needle required to get gauge) for the ribbing or size needed to get the gauge right. One 40 cm needle, 3.25mm (or size required to get gauge) and 3.25mm DPNs or a longer circular needle for Magic Loop method for crown shaping

Gauge: 30 stitches and 22 rows per 10 centimetres.

## Other notions:

- ❖ Stitch marker for BOR
- ❖ Waste yarn for CO
- ❖ Darning needle for weaving in ends
- ❖ Balloon or bowl for blocking



Photo: Lotta Lappi

*Copyright Ann-Cathrine Sipilä, Ullrike by Anki 2020.*

This patterns is for personal use only, do not reproduce and sell the pattern or sell items knitted from this pattern. Any questions regarding this pattern? Please contact ullrikebyanki@gmail.com.

## DIRECTIONS:

With smaller needles and MC, CO 76 sts using the Tubular Cast On method: with the waste yarn, CO 76 sts using the Long Tail Cast On method. Join in the round being careful not to twist the ring of sts and PM for BOR. Break the waste yarn and attach main yarn to the work.

**Tubular Round 1:** \*K1, YO; rep from \* until end.

**Tubular Round 2:** \*SL1 wyib, p1; rep from \* until end.

**Tubular Round 3:** \*K1, sl1 wyif; repeat from \* until end. You can now undo the waste yarn from the cast on edge.

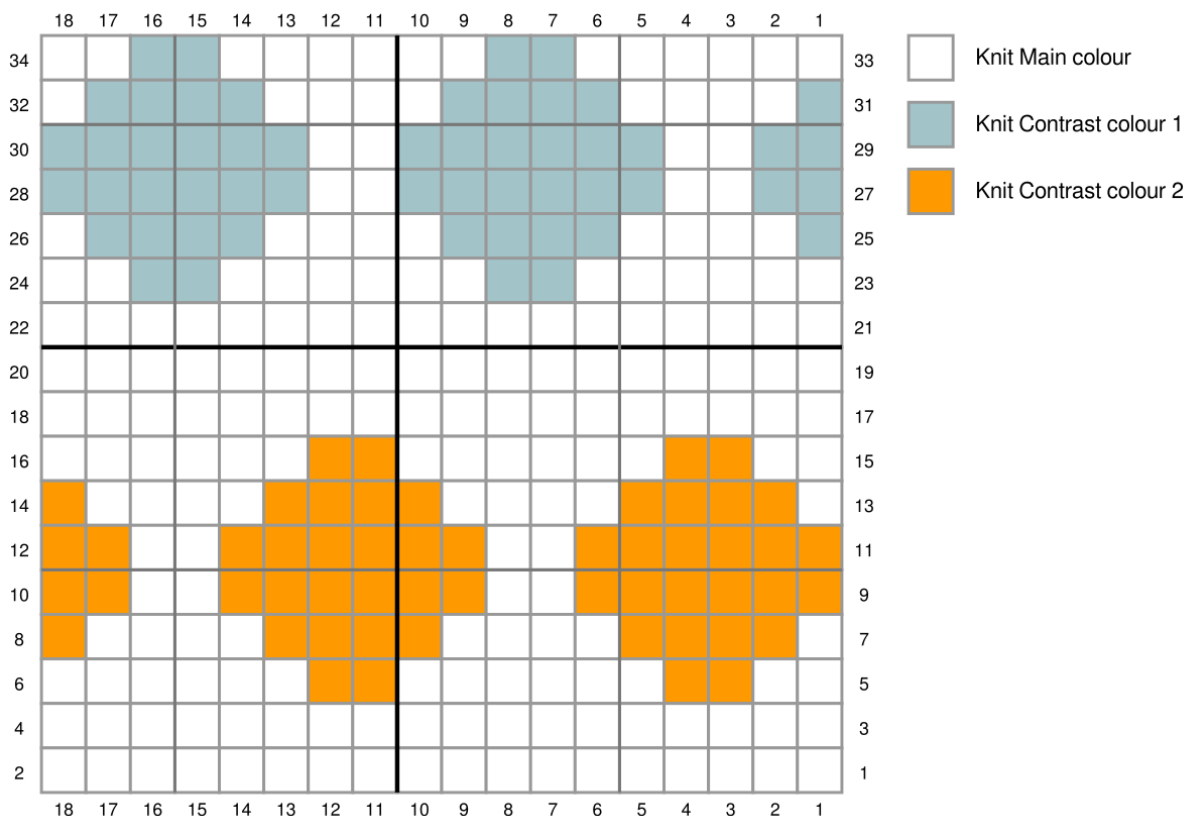
*Note: if you prefer a less flexible cast on edge you can use the long tail method and CO 152 sts.*

**Ribbing Round:** \*K1, p1; rep from \* until end.

Repeat ribbing round until brim measures 5 cm from bottom edge.

Switch to larger needles, knit and increase 10 sts at equal intervals during the first round = 162 sts.

Begin chart starting on round 1 in the right corner of the chart, repeat chart until end of round. Knit rounds 1 – 17 two times.



*Copyright Ann-Cathrine Sipilä, Ullrike by Anki 2020.*

This patterns is for personal use only, do not reproduce and sell the pattern or sell items knitted from this pattern. Any questions regarding this pattern? Please contact [ullrikebyanki@gmail.com](mailto:ullrikebyanki@gmail.com).

## Crown:

Start the decreases of the crown of the hat as follows:

Decrease round 1: K7, K2tog = 18 decreases  
Knit 3 rounds.

Decrease round 2: K5, K2tog = 24 decreases  
Knit 3 rounds.

Decrease round 3: K3, K2tog = 24 decreases  
Knit 3 rounds.

Decrease round 4: K2, k2tog = 24 decreases  
Knit 3 rounds.

Decrease round 5: K1, K2tog = 24 decreases  
Knit 3 rounds.

Decrease round 6: K2tog to the end of round  
Knit 3 rounds

Decrease round 7: K2tog to the end of round  
Knit 3 rounds.

Cut yarn and weave through the remaining stitches. Weave in ends on the wrong side and block to shape on a bowl or a balloon if possible. Wear with joy and pride!

## Abbreviations:

CO cast on

BOR beginning of round

K knit

P purl

PM place marker

ST(S) stitch(es)

YO yarn over

SL1 slip one

WYIF with yarn in front

M1 make one

K2tog = knit two stitches together; decrease



Photo: Lotta Lappi

*Copyright Ann-Cathrine Sipilä, Ullrike by Anki 2020.*

This patterns is for personal use only, do not reproduce and sell the pattern or sell items knitted from this pattern. Any questions regarding this pattern? Please contact [ullrikebyanki@gmail.com](mailto:ullrikebyanki@gmail.com).